



FAM 14

Prepared by THE SAN FRANCISCO AERONAUTICAL SOCIETY

President's Message Spring 1999 A NEW ORGANIZATION IS FORMED

In this, the first edition of FAM 14, I would like to introduce you to The San Francisco Aeronautical Society.

Formed in 1997, the Aeronautical Society is committed to preserving the history of aviation, and to providing information and resources to students, scholars, and the general public. The Society will do this by supporting and seeking visibility and donations to The San Francisco Airport Commission Aviation Library and The Louis A. Turpen Aviation Archive and Museum.

A working library with 5,000 book titles about aviation, The San Francisco Airport Commission Aviation Library will focus on the history of American and commercial aviation. A unique feature of the Aviation Library will be its' collection of transcribed oral histories from pioneer aviators and aviation personnel including Captain Kenneth Beer and Captain Wallace Dean.

The Library facility will also house The Louis A. Turpen Archive and Museum, which currently has a collection of over 6,000 objects. The extent of this collection is largely due to the generous donations of important documents and artifacts from the Pan Am Historical Foundation, the Pan Am Association, the Clipper Pioneers, and World Wings International. We would like to thank these organizations for their commitment to preserving the memories of flight.

On behalf of the Founding Board of The San Francisco Aeronautical Society, I would like to invite you to become a part of this exciting and enriching study of aviation history. Your support and participation are most welcome.

Sincerely,

Louis A. Turpen
President

Founding Board Members

Louis A. Turpen, Patrick A. Murphy, Angela Gittens,
Zuretti L. Goosby, Jerry O'Donnell, Zoe Dell Lantis Nutter

San Francisco International Airport Preserves the Past while Preparing for the Future

It is with pleasure that we gratefully acknowledge the efforts of The San Francisco Aeronautical Society on the occasion of its first publication, FAM 14.

SFO's Master Plan includes an aviation library, archive, and museum; the first of its kind in an airport. As San Francisco is the *Gateway to the Pacific*, the Airport Commission is dedicated to preserving aviation history in the Pacific region. This facility, scheduled to open in the year 2000, has been formally named, The San Francisco Airport Commission Aviation Library and The Louis A. Turpen Aviation Archive and Museum.

Our thanks to the Society's Founding Board Members for their dedication in promoting the Airport's goal to enrich public awareness of the historic achievements in aviation. The Airport is particularly grateful to Louis A. Turpen for his vision and commitment to the future.

Henry E. Berman
President
Airport Commission

John L. Martin
Airport Director

THE SAN FRANCISCO AERONAUTICAL SOCIETY

Founded August 6, 1997, The San Francisco Aeronautical Society is a federal, nonprofit organization dedicated to the creation of a unique, active West Coast center for aviation. The Aeronautical Society will create a support group of aviation professionals to provide expertise for the San Francisco Airport Commission Aviation Library and The Louis A. Turpen Aviation Archive and Museum.

The Aeronautical Society is promoting visibility for this exciting new facility, and is actively seeking donations of aviation literature, historical artifacts, and memorabilia. Charter-Corporate memberships are being sought to support various functions of the facility, from the galleries to the study sites. They support the concept that mankind is only able to be prepared for the future by understanding the past.

FAM 14 is the abbreviation for the world's first transoceanic Foreign Air Mail route. It originated in San Francisco and linked the East and West by air.

The FAM 14 masthead photograph was taken by Clyde Sunderland. It shows the China Clipper over San Francisco on November 22, 1935, departing on the first transpacific commercial flight to Manila. Courtesy of Pacific Aerial Surveys.

THE SAN FRANCISCO AIRPORT COMMISSION AVIATION LIBRARY AND THE LOUIS A. TURPEN AVIATION ARCHIVE AND MUSEUM



19.15.25 (12.29.37) - San Francisco Airport - Administration Building - South End of Waiting Room from Balcony

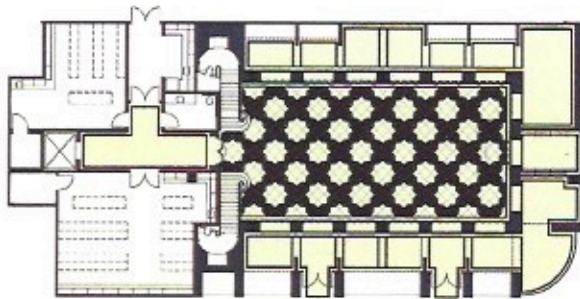
San Francisco Airport Administration Building interior view, 1937

Gelatin silver print

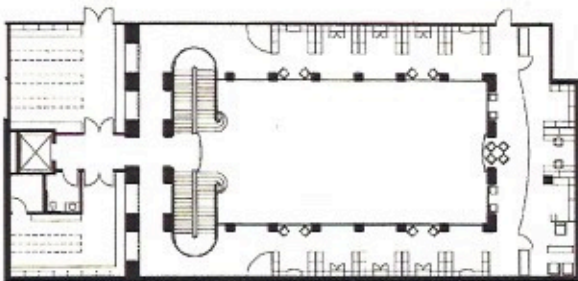
San Francisco Airport Museums, Aviation Collection

The history of commercial aviation is being preserved for future generations at the San Francisco International Airport. A permanent state-of-the-art library, archive, and museum facility occupying more than 6,200 square feet will be located within the Airport Master Plan's new International Terminal, scheduled to open in the year 2000. The interior design is based on the original 1937 Airport passenger waiting room. Professional museum storage, preservation, and cataloging are already being provided for the growing collection.

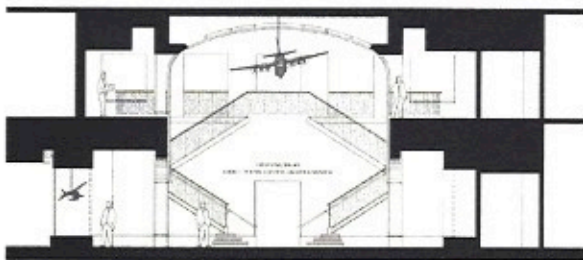
The San Francisco Airport Commission Aviation Library and The Louis A. Turpen Aviation Archive and Museum are being developed into a study center for the preservation of aviation history with a focus on the role of San Francisco Airport as the Gateway to the Pacific. With an emphasis on commercial aviation, the Airport Facility will provide an educational resource that is unique among air museums.



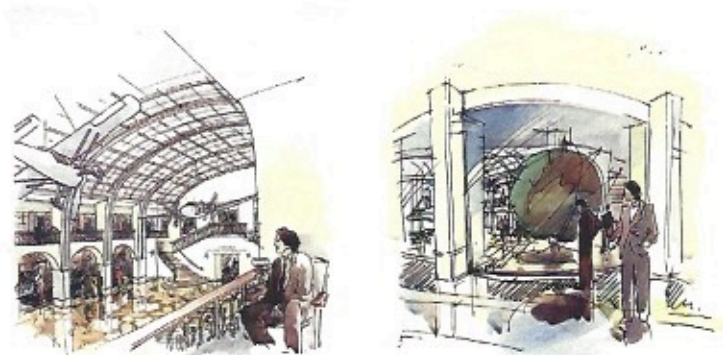
MAIN FLOOR PLAN



UPPER LEVEL FLOOR PLAN



BUILDING SECTION

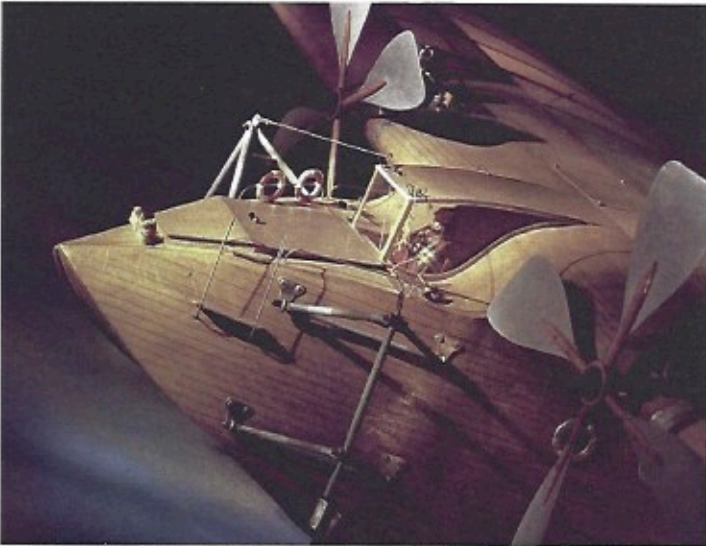


Drawings and renderings by
Fong and Chan Architects (FCA)

THE GOOSEDALE MODEL AVIATION MUSEUM COLLECTION



Pfalz D.XII, German fighter bi-plane, c.1918
Polychrome balsa, metal fittings and wire



Alphonse Pénaud's amphibious monoplane 9 (detail), designed in 1876
Treated striated paper, wood, metal fittings and wire



David Wright
Supermarine Spitfire Mk IX, c.1942
Polychrome balsa, metal, plexiglass, rubber
San Francisco Airport Museums, Aviation Collection,
Goosedale Model Aviation Museum Collection

Photographs by Michael Werner

The core collection of the Goosedale Model Aviation Museum boasts over 100 civil and military aircraft models. Most of the planes are radio-controlled and in flying condition. Notable models include a Supermarine Spitfire Mk IX and a Hawker Hurricane, both of the Battle of Britain fame, and the Memphis Belle, a Boeing B-17F Flying Fortress, whose crew was the first to complete twenty-five operational missions over Europe in World War II. Other important airplanes include a Stearman N2S-3 trainer, a deHavilland Tiger Moth trainer, and a superb replica of Baron von Richthofen's (aka the "Red Baron") Fokker triplane from World War I.

Regarded as the finest assemblage of scale aircraft models in the world, the Goosedale Collection was the creation of Michael Ward of Nottingham, England. In a lush country setting, he restored a crumbling hunting lodge of King Charles II into an aviation museum, two restaurants, and two large flying areas on the estate's 150 acres. On April 15, 1990, Mr. Ward opened the Goosedale Model Aviation Museum to the public, formed the Goosedale Pilot's Association, and encouraged the members to fly their model aircraft in the area.

In February 1998, shortly after Mr. Ward's death, this extraordinary collection arrived from England to become an integral part of the San Francisco Airport's Louis A. Turpen Aviation Archive and Museum. The Goosedale acquisition includes a research library containing approximately 450 books, and 1,000 magazines and periodicals devoted to military and civil aircraft, aviation history, and modeling.

Michael Ward (1936 - 1997)

Born and raised in Little Hampton, on the beach, Michael Ward grew up during World War II. His father was one of a group of men—too old to go to war—who built the invasion barges for D-Day. His father was in charge of the beaches, on which only Michael and his dog were allowed to play. The beach was mined, but even as a four year old, he knew where the mines were. The beach is where Michael learned to build boats, which he constructed until fiberglass replaced wood. He was a brilliant engineer who turned his interest from boats to building airplanes creating the Goosedale Model Aviation Museum.

FAMOUS FIRST FLIGHTS

China Clipper Outbound

November 22, 1935

Foreign air mail routes were awarded by the United States Postal Service to American air carriers with proven reliability. Pan American Airways secured the rights to Foreign Air Mail Route 14, (FAM 14), which traversed the Pacific Ocean from San Francisco to Manila, via Honolulu, Midway, Wake, and Guam. The company set November 22, 1935, for the history-making first commercial flight of its Martin M-130 flying boat registered NC14716. The four engine transport, dubbed the *China Clipper*, lifted off San Francisco Bay and passed through the Golden Gate outbound for Honolulu. This inaugural flight, the world's first regularly scheduled, transoceanic service, captured the public's imagination as news agencies reported its progress.

The *China Clipper*, under the command of Captain Edwin Musick, carried 110,865 pieces of mail that day. Each bore a distinct cachet stamped on the cover to commemorate the famous first flight over FAM 14.



Jerry O'Donnell

Profiles in Aviation

Jerry O'Donnell, a New York City native, has soared to many destinations both in the air and through his business acumen. His aviation portfolio includes the International Air Transportation Association Agency, the Hong Kong Air Advisory Board, the Hong Kong Board of Airline Representatives, the Pan Am Historical Foundation, The San Francisco Aeronautical Society, and a thirty year term as Vice President and Corporate Officer of Pan American Airways. His responsibilities have taken him as far afield as the South Pacific, Asia, Africa, the Middle East, and throughout North and South America.

Jerry O'Donnell's complementary experience within the tourism and hotel industry offers an insightful perspective into commercial aviation.

We would like to thank Founding Board Member Jerry O'Donnell for his commitment to the preservation of aviation history through his dedication to The San Francisco Aeronautical Society.

CONTACT!

For additional information, please contact the San Francisco Airport Museums at (650) 652-2772, or you can e-mail curator@sfoArts.org. You can also visit the website <http://www.sfoArts.org>.



Left: Preparing to load mail aboard the *China Clipper* at Alameda on San Francisco Bay, November 22, 1935
Gelatin silver print
San Francisco Airport Museums, Aviation Collection
Gift of Beatrice H. Springer



First Flight Cover, San Francisco-Honolulu, November 22, 1935
Printed paper
San Francisco Airport Museums, Aviation Collection